



pointmark

REAL ESTATE LIMITED

transaction history



old mill terrace, etobicoke
multi-family, 26 units
january 2023



brookdale avenue, toronto
multi-family, 47 units
january 2023



bathurst street, toronto
multi-family, 47 units
january 2023



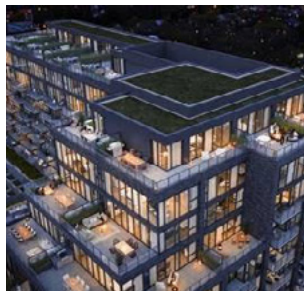
bowie avenue, toronto
7 acre mixed use development site
march 2022



wellington street west, toronto
60,000 sf future development
july 2020



king street west, toronto
5,000 sf retail property
march 2019



the queensway, toronto
40,000 sf development site
march 2019



st.clair avenue west, toronto
24,200 sf development site
december 2018



st.clair avenue west, toronto
24,300 sf development site
december 2018



eglinton avenue west, toronto
16,000 sf development site
september 2018



yonge street, toronto
44,000 sf office condominium
january 2018



church street, toronto
advisory re: land assembly
november 2017

E&OE – some images are stock, and for display only



king street west, toronto
7,400 sf development site
november 2017



avenue road, toronto
3,000 sf office building
march 2017



dufferin street, toronto
25,000 sf mixed use building
august 2016



richmond street west, toronto
land assembly
july 2016



dufferin street, toronto
45,000 sf office building
june 2016



ossington avenue, toronto
17,500 sf retail & office building
february 2016



college street, toronto
15,000 sf development site
july 2015



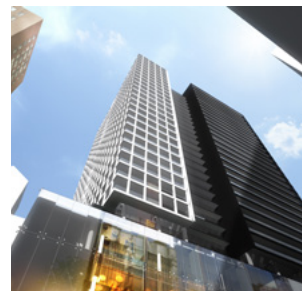
wellington street west, toronto
12,500 sf development site
july 2015



yonge street, toronto
62,000 sf mixed use building
may 2015



st.mary street, toronto
10,000 sf development site
march 2014



edward street, toronto
32,000 sf development site
february 2014



yonge street, toronto
12,000 sf office building
may 2013

E&OE – some images are stock, and for display only



king street west, toronto
76,000 sf office building
may 2013



king street west, toronto
13,600 sf office building
october 2012



adelaide street west, toronto
17,000 sf development site
august 2012



king street west, toronto
12,000 sf office building
july 2012



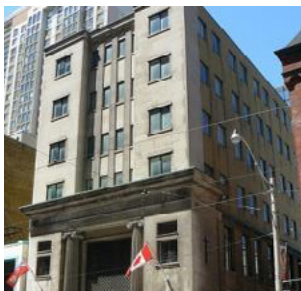
davenport road, toronto
12,000 sf development site
july 2012



adelaide street west, toronto
assembly - 6,200 sf
april 2012



richmond street west, toronto
assembly - 2,500 sf
april 2012



college street, toronto
25,000 sf office building
june 2011



john street, toronto
6,000 sf office building
june 2011



adelaide street west, toronto
assembly - 3,100 sf
june 2011



wynford drive, toronto
130,000 sf office building
february 2011



davenport road, toronto
12,000 sf office building
november 2010

E&OE - some images are stock, and for display only



king street west, toronto
11,500 sf development site
november 2008



john street, toronto
73,000 sf office building
march 2008



adelaide street west, toronto
100,000 sf office building
march 2008



sheppard avenue west, toronto
140,000 sf office
february 2008



king street east, toronto
18,000 sf development site
january 2008



richmond street west, toronto
66,000 sf office building
january 2008



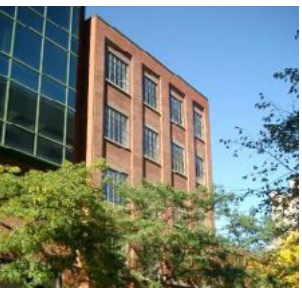
front street east, toronto
34,000 sf office building
april 2007



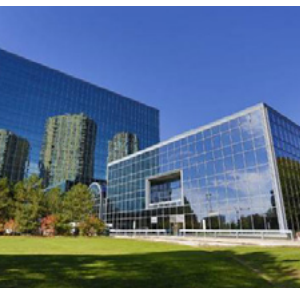
yonge street, toronto
15,000 sf development site
march 2007



king street west, toronto
25,000 sf development site
december 2006



st.patricks street, toronto
17,500 sf office building
november 2006



concord gate, toronto
550,000 sf office building
august 2006



king street west, toronto
20,000 sf office building
july 2006

E&OE – some images are stock, and for display only



king street west, toronto
36,000 sf development site
february 2005



richmond street west, toronto
40,000 sf office building
may 2004



adelaide street west, toronto
40,000 sf office building
may 2004



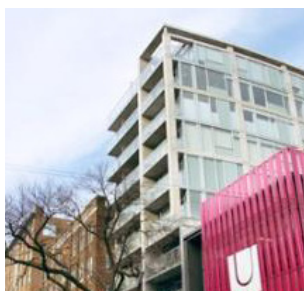
wellington street east, toronto
32,123 sf office building
april 2004



st.clair avenue west, toronto
34,500 sf office building
february 2004



bishop street, toronto
5,000 sf office building
september 2003



john street, toronto
6,000 sf development site
january 2003

E&OE – some images are stock, and for display only